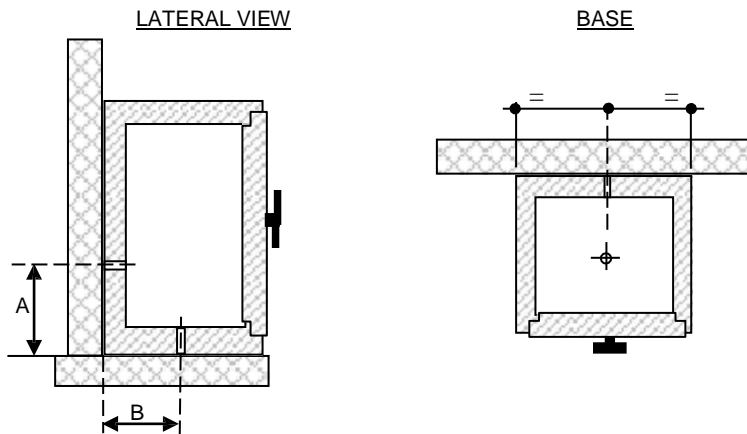


INSTRUCTIONS FOR ANCHORING

model C - CH - CT



The drawings are only for explication

MODEL	C-CH20	C-CH35	C-CH 30	C-CH 40	C-CH 60	C-CH 80	C100
Quota A	205	250	300	400	500	600	700
Quota B	185	230	270	230	270	270	270

MODEL	CT10L-M	CT15L-M	CT25L-M	CT30L-M	CT35L-M	CT45L-M	CT55L-M
Quota A	450	490	600	750	690	860	975
Quota B	280	315	325	315	315	315	315

MODEL	CT10Z	CT15Z	CT25Z	CT30Z	CT35Z	CT45Z	CT55Z
Quota A	473	518	660	773	713	883	998
Quota B	277	377	397	377	377	377	377

Dimension in mm

INFORMATION ABOUT THE ANCHORAGE SERVICE

The norm EN 1143-1 provides that safes weighing less than 1,000 kg must be anchored to a suitable resistant structure to resist to an easy removal. Safe guarantees the resistance to uprooting only for its structure and for the means of connection (screw / stud).

It is evident that the anchor cannot be considered as a bond of infinite strength removal, but as a means as that opposed to it so what is the best feature of the hosting structure (floor and/or wall) to a value resistance at least equal to that shown in the reference standard.

Conforti Spa advises anchorage of background to create a greater contrast to attacks. The anchoring service is limited to the execution of drilling and application of fixing components; for CONFORTI SPA is not possible any other considerations on the nature of the host.